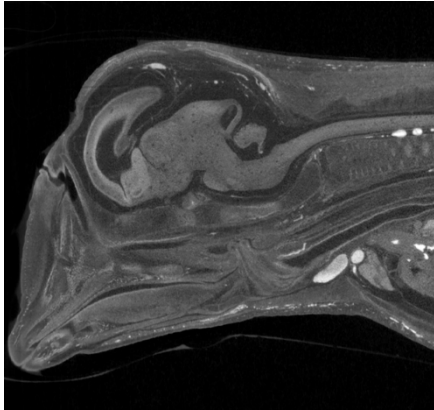


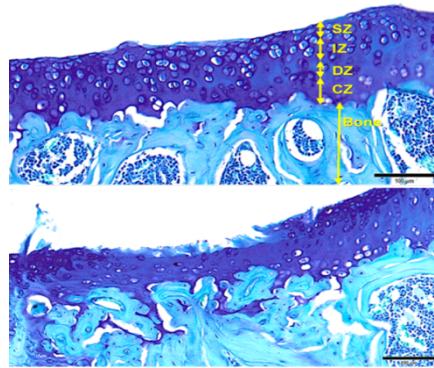
Special Topics Graduate Course Integrated Musculoskeletal Biology

A team-taught graduate course offered through the Kent State University School of Biomedical Sciences.

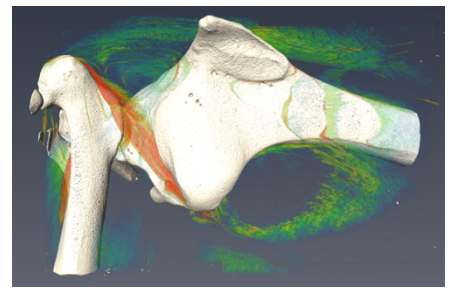
The study of musculoskeletal biology encompasses multiple fields including classical anatomy, developmental biology, cellular/molecular biology, evolutionary biology, and clinical sciences. This course will provide students with a hierarchical understanding of musculoskeletal form and function, from molecules to macroevolution, and a thorough grounding in the scientific concepts and approaches used to advance musculoskeletal research.



Development



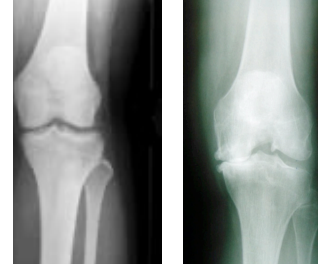
Cellular/Molecular Biology



Functional Anatomy



Comparative Anatomy and Evolution



Clinical Sciences

Course title: Integrated Musculoskeletal Biology

Course number: BMS 6/70295-001

Credit: 4 hours

Schedule: Class begins on Friday, January 22nd, 2021

Meets Monday 1:30-4:00pm and Friday 1:00-4:00pm

Location: The course will meet on the campus of the Northeast Ohio Medical University (15 minutes east of Kent). Lectures will simultaneously broadcast over Zoom. Voluntary laboratory experiences will be held on the NEOMED campus.

For information contact: Dr. Jesse W. Young

330-325-6304

jwyong@neomed.edu

Sponsored and developed by the NEOMED Musculoskeletal Biology Research Focus Area