



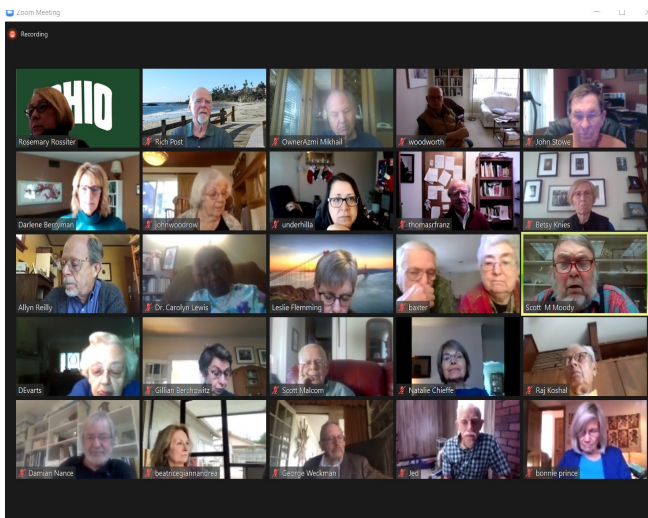
# Emeriti Association OHIO UNIVERSITY

December  
2020

The November 19, 2020 Emeriti Association Zoom meeting featured **Dr. Darlene Berryman**, Professor of Biomedical Sciences and Associate Dean, Research and Innovation, at the Heritage College of Osteopathic Medicine.

Emeriti President Rosemary Rossiter hosted the Zoom meeting. Due to scheduling, the first segment featured informal chat room sessions so that Emeriti could share information and questions. Professor Berryman was then introduced by Emeriti Association Vice President Scott Moody.

Below are a synopsis and selected screen shots from the Zoom conference and presentation. For those Emeriti who missed the meeting, an audio MP3 file of the Zoom presentation can be made available.



The next Emeriti Association meeting is scheduled for **December 17, 2020 at 11:00 AM** and will also be held using Zoom. An invitation for the Zoom meeting will be sent to all those on the Emeriti listserv on or before December 16th.

Emeriti Association Secretary Allyn Reilly announced that the December meeting will feature a **holiday-themed** concert from OhioBrass, Ohio University's faculty-artist brass quintet in residence.



The [School of Music has its own Youtube channel](#) and the concert will be available on that channel after the performance for the Emeriti.



<= QR code for the School of Music Youtube Channel

---

**Summary of the Emeriti Meeting November 19, 2020 (Conducted on Zoom)  
by Allyn Reilly - Secretary, Ohio University Emeriti Association**

The meeting was convened by President Rosemary Rossiter at 11:03 AM.

A general welcome was given to all, with many attendees---especially those now living outside of Athens and unable to attend if we had our usual physical meeting at the OU Inn—expressing thanks for presenting the meeting in virtual format. After the welcoming, we were placed in breakout rooms, which enabled us to speak with groups of half dozen or so of our fellow Emeriti.

Following our callback from the breakout rooms, we reconvened as a large group and heard a presentation from Dr. Darlene Berryman, Associate Dean for Research with the Heritage College of Medicine. She discussed what she termed an “eclectic” range of topics associated with the Colleges’ large expansion of its research capabilities, made possible by a generous grant of \$105,000,000 from the Osteopathic Heritage Foundation. This has helped propel the Ohio University Heritage College to one of the best-funded osteopathic colleges in the nation in research funding.

These funds have been used for a wide variety of research projects; the remainder of Dr. Berryman’s talk touched upon many aspects of that research and the participation of many of the other colleges at Ohio University that are engaged in it. Thus the research program at the Heritage College has helped in many allied research areas throughout the University.

Dr. Berryman has cited the team approach to research—groups of faculty across the University who are engaged in different aspects of the research project—as the “wave of the future” in research funding and implementation. In addition, while biomedical data is mushrooming, an interdisciplinary, team-centered approach is necessary to adequately evaluate and assess this data. Progress is being made, and the approach that the Heritage College has taken may indeed point the way for others.

Those who wish to direct questions to Dr. Berryman may do so at: [berrymad@ohio.edu](mailto:berrymad@ohio.edu)


Allyn Reilly  
Secretary, Ohio University Emeriti Society

## Selected screen shots from Dr. Berryman's presentation

Zoom Meeting


Recording

### Transformative Funding from OHF Empowers Our Vision



Osteopathic  
Heritage  
Foundations

- Awarded to HCOM in April 2011
- \$105M Award
- Overarching Goals:
  - To transform HCOM into a nationally prominent medical college that trains primary care physicians to serve the rural and underserved areas in Ohio.
  - Funding priorities toward scholarship endowment, capital and **research**.
  - For **research**, focus on growth of diabetes-related and neuromusculoskeletal research.



OHIO

Rosemary Rossiter

Rich Post

OwnerAzmi...

woodworth

Darlene Berryman


Johnwoodrow

Zoom Meeting

You are viewing Darlene Berryman's screen View Options

Recording

View

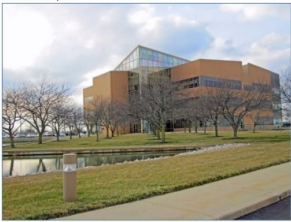


Athens Campus


# Thank You!

Heritage College of  
Osteopathic Medicine

[berrymad@ohio.edu](mailto:berrymad@ohio.edu)




Dublin Campus



Cleveland Campus

25



Darlene Berryman

Unmute Stop Video

Participants 29

Chat 4

Share Screen

Record

Leave

Zoom Meeting

Rich Post, Rosemary Rossiter, Darlene Berryman, Leslie Flemming, Scott M Moody, Scott Malcom

# Tiered Structure of Research Endowments

**Diabetes Research Endowment \$5M**

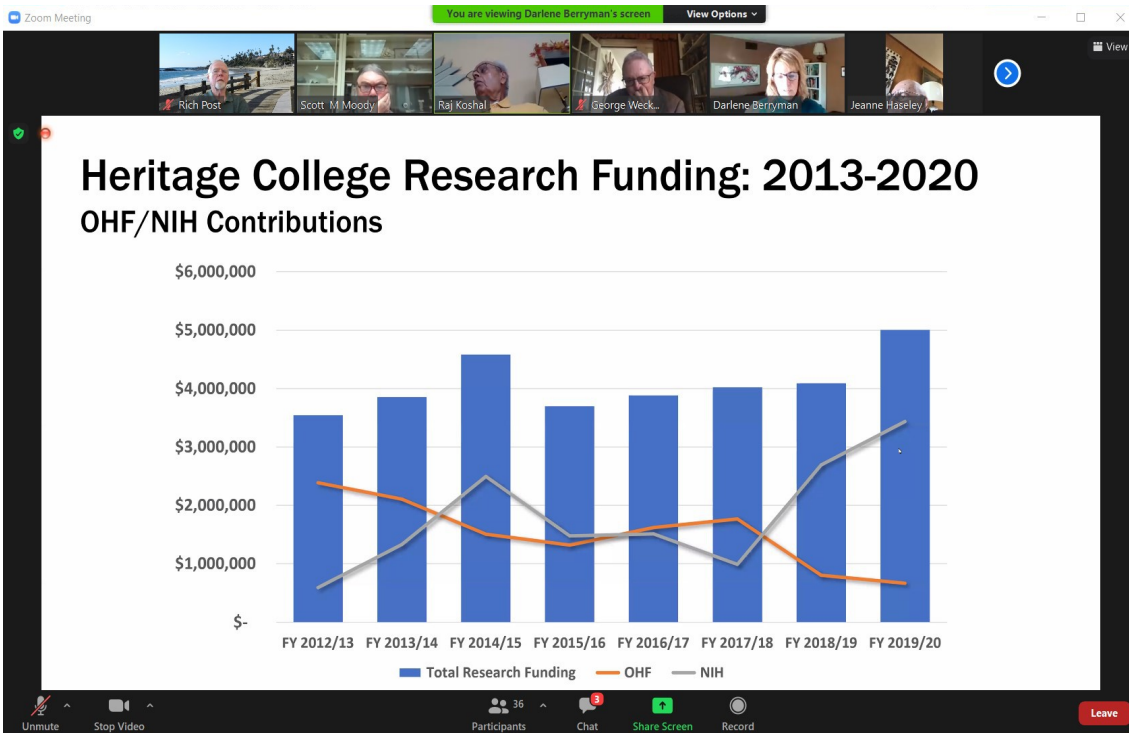
- \$5M OHF John J. Kopchick, Ph.D., Endowed Eminent Research Chair

**Translational Research Endowments \$5M**

- \$2.5M OHF Harold E. Clybourne, D.O., Endowed Research Chair
- \$2.5M OHF James O. Watson, D.O., Endowed Research Chair

**Translational Research Endowments \$7M - OHF Ralph S. Licklider, D.O.**

- Heritage Endowed Professorship(s)
- Heritage Faculty Endowed Fellowship(s)\*
- Heritage Career Development Faculty Endowed Fellowship(s)\*



Zoom Meeting You are viewing Darlene Berryman's screen View Options

Rich Post Scott M. Moody Raj Koshal George Weck... Darlene Berryman Jeanne Haseley

## Recent NIH Funding Recipients

Unmute Stop Video Participants 36 Chat Share Screen Record Leave

Zoom Meeting Recording

## ITDI Research Foci

- Tropical Disease Initiative:** Biology of Chagas disease; malaria research; medical entomology of *Aedes aegypti* mosquitoes (Zika, Chikungunya, dengue fever)
- Healthy Living Initiative:** Social and economic development for long-term Chagas disease control in Ecuador.
- Reproductive/Sexual Health Initiative:** Public health and research in sexually transmitted diseases
- Bacterial Pathogenesis:** Molecular mechanisms underlying virulence gene expression, virulence-associated bacterial processes, host-pathogen interactions.

29 Faculty 6 Colleges

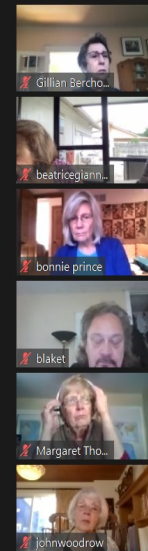
Darlene Berryman

## Proposed mechanisms to strengthen clinical and translational research capabilities



1. Implement strategic faculty investments in institutes, initiatives and emerging technical areas and leverage "cluster hires"
2. Expand, Optimize and Modernize Clinical and Translational Research Space
3. Create a Biomedical Data Science Initiative (or Institute, Focus or Core)
4. Develop an OHIO Clinical Research Network with our Education Affiliates and Partners
5. Establish a unified administrative research infrastructure to oversee, coordinate support services, and maintain health-related cores
6. Bolster existing interdisciplinary doctoral programs with ties to clinical and translational research

19



Leave